

The CL-ES01A PAR sensor optimizes growing conditions for all types of horticultural facilities to measure photosynthetically active radiation (PAR or PPFD) from all light sources used to grow plants. CL-ES01A sensor measures the photosynthetic radiation spectral range of 350 – 1100 nm.

## FEATURES

- Durable aluminum alloy housing
- Waterproof connector
- Mounting holes
- High sensitivity readings



Complies with applicable CE directives.

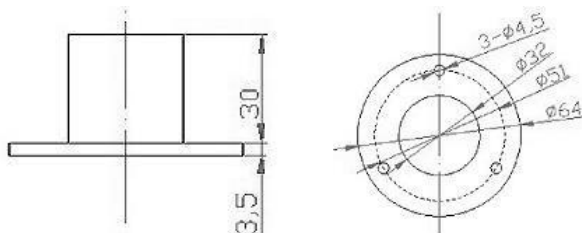
## APPLICATIONS

- Crop growth monitoring (indoor horticulture, greenhouses, grow tents)
- Agrometeorological research
- Ecological research

## SPECIFICATIONS

▪ Spectral range	▪ 350 – 1100 nm
▪ Supply	▪ 12VDC
▪ Accuracy	▪ $\pm 5\%$ of reading
▪ Range	▪ 0 – 2000W/m <sup>2</sup>
▪ Output	▪ 0 – 2000mV
▪ Sensitivity	▪ 1000 $\mu$ V/W/m <sup>2</sup>
▪ Response time	▪ <1s (99%)
▪ Temperature effect	▪ <0.05% / C
▪ Cosine correction	▪ <10% (until 80°C)
▪ Non-linearity	▪ < $\pm 2\%$
▪ Operating temperature	▪ -40 – 80°C (-40 – 176°F)
▪ Housing material	▪ Aluminum alloy
▪ Cable length	▪ 59 inches (1.5m)

## DIMENSIONS (Unit:mm)



## TECHNICAL SUPPORT

For support inquiries:

Visit: <https://www.cyclogic.net/>

E-mail: [help@cyclogic.net](mailto:help@cyclogic.net)